

KT-11 SERIES

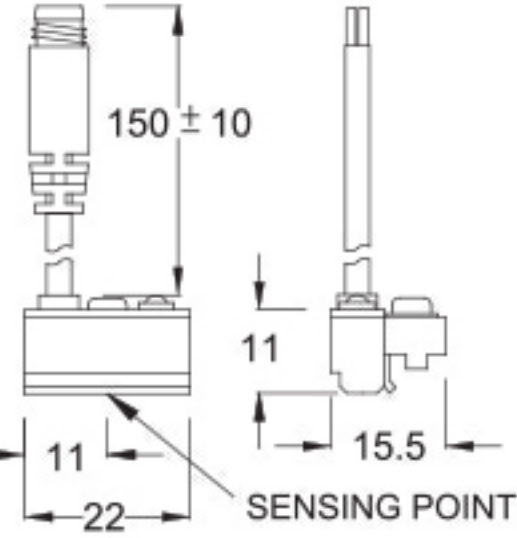
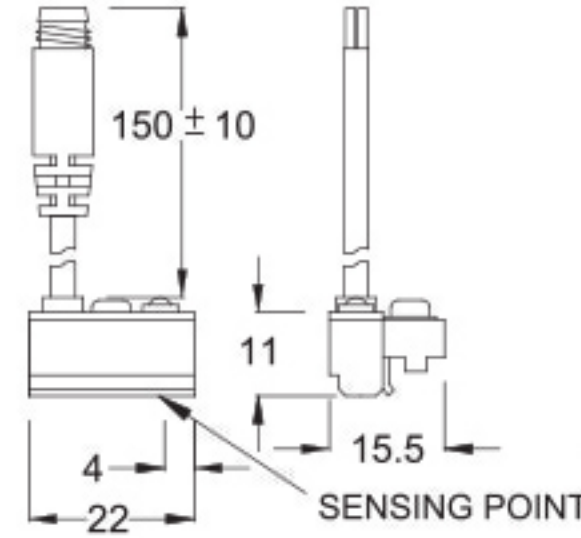
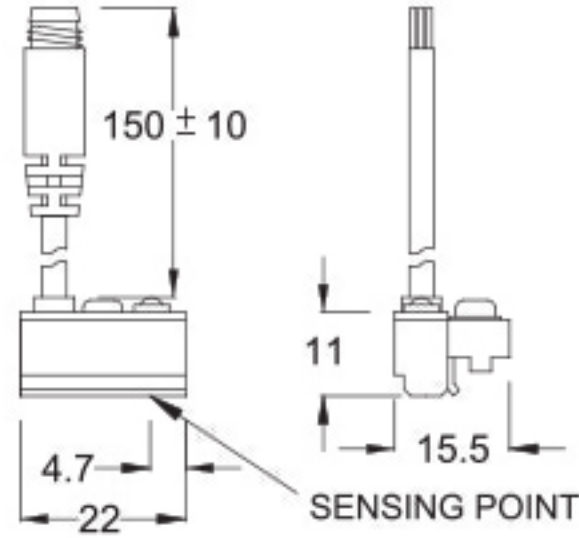


■ DIMENSIONS

KT-11N, KT-11P /
KT-11N-QD, KT-11P-QD

KT-11D / KT-11D-QD

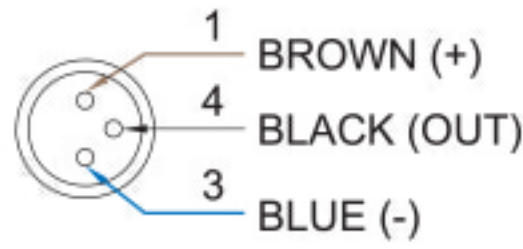
KT-11R / KT-11R-QD



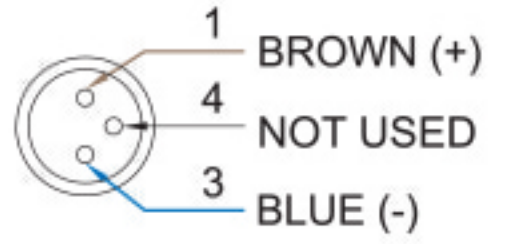
Unit:mm

■ QD PINOUT

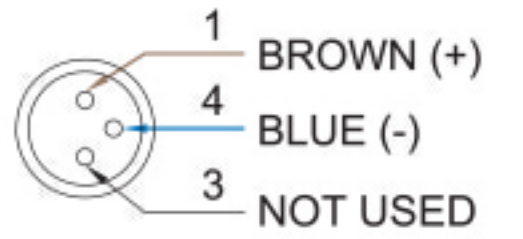
*3 wire QD wiring



*2 wire QD wiring



*2 wire EQD wiring



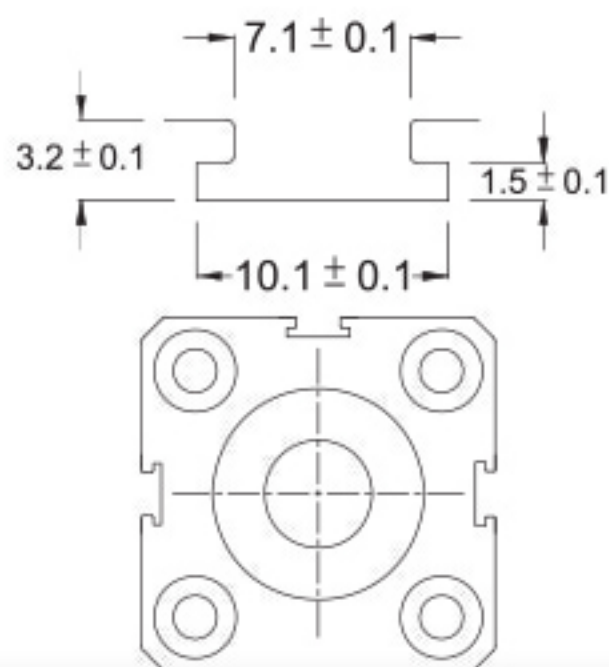
■ SPECIFICATIONS

| TYPE | KT-11R | KT-11D | KT-11N | KT-11P |
|--------------------------|---------------------|-------------|-----------------------------------|----------------------|
| CONNECT DIAGRAM | | | | |
| CHARACTERISTICS | 2-Wire Type | | 3-Wire Type | |
| Wiring Method | 2-Wire Type | | 3-Wire Type | |
| Switching Logic | SPST, Normally Open | - | Solid State Output, Normally Open | |
| Sensor Type | Reed Switch | - | NPN Current Sinking | PNP Current Sourcing |
| Operating Voltage | 5~240V DC/AC | 10~28V DC | 5~30V DC | |
| Switching Current | 100mA max. | 4~40mA max. | 200mA max. | |
| Contact Rating (*1) | 10W max. | 1.5W max. | 6W max. | |
| Current Consumption | - | - | 22 mA @ 24V DC max. | 20 mA @ 24V DC max. |
| Voltage Drop | 3.5V max. | | 0.5V max. | |
| Leakage Current | - | 1mA max | 0.01mA max. | |
| Indicator | Red LED | Green LED | Red LED | Green LED |
| Cable | ø3.3, 2C, PVC | | ø3.3, 3C, PVC | |
| Operating Frequency | 200Hz | - | 1000Hz | |
| Magnet Requirement (*2) | 70Gauss | - | 60Gauss | |
| Temperature Range | -10~70°C | | | |
| Shock (*3) | 30G | - | 50G | |
| Vibration (*4) | 9G | | | |
| Enclosure Classification | IEC 60529 IP67 | | | |
| Protection Circuit (*5) | 1 | 4 | 3,4 | |

NOTE:

1. WARNING: Never exceed rating (Watt=Voltage x Amperage). Permanent damage to sensor will occur.
2. Measuring standard target: ø15.5Xø8X5t (Anisotropy rubber magnet)
3. Sin wave / X, Y, Z 3 directions / 3 times each direction / 11 ms each time.
4. Double amplitude 1.5 mm / 10Hz~55Hz~10Hz (Sweep 1 min) / X, Y, Z 3 directions / 1 hour each time.
5. 1=None / 2=Short-circuit / 3=Power Source Reverse polarity / 4=Surge Suppression

■ GROOVE DIMENSIONS



Unit:mm