

# KT-58 SERIES

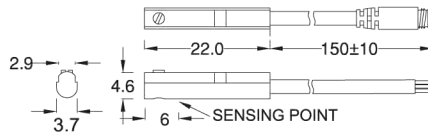


## Magnetic switch

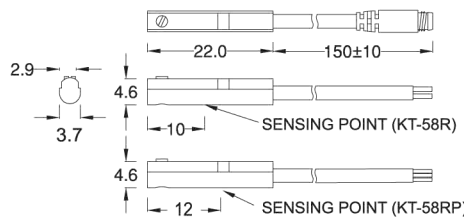


### ■ DIMENSION

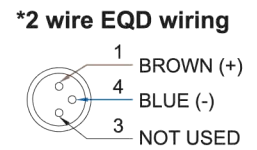
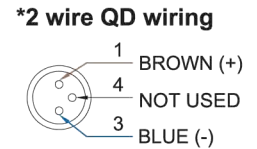
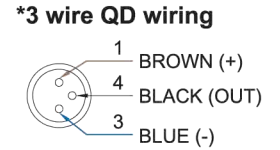
KT-58N, KT-58P / KT-58N-QD, KT-58P-QD



KT-58R, KT-58RP / KT-58R-QD,KT-58RP-QD



### ■ QD PINOUT



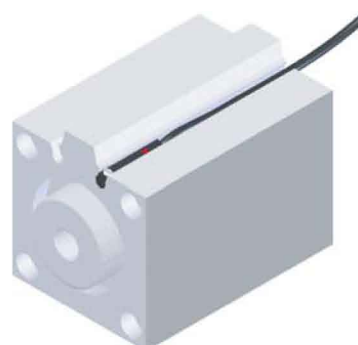
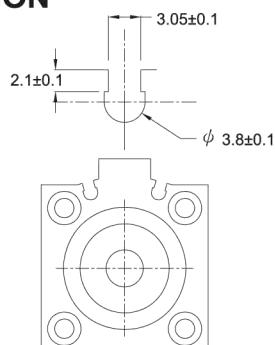
Unit:mm

### ■ SPECIFICATION

TYPE	KT-58R	KT-58N	KT-58P	KT-58RP
<b>CONNECT DIAGRAM</b>				
<b>CHARACTERISTICS</b>				
<b>WIRING METHOD</b>	2-Wire Type	3-Wire Type		
<b>SWITCHING LOGIC</b>	SPST, Normally Open	Solid State Output, Normally Open		SPST, Normally Open
<b>SENSOR TYPE</b>	Reed Switch	NPN Current Sinking	PNP Current Sourcing	Reed Switch
<b>OPERATING VOLTAGE</b>	5~120V DC/AC	10~30V DC		10~30V DC/AC
<b>SWITCHING CURRENT</b>	100 mA max.	200 mA max.		500 mA. max.
<b>CONTACT RATING (NOTE 1)</b>	10 W max.	6 W max.		10 W max.
<b>CURRENT CONSUMPTION</b>	--	10 mA @ 24V DC max.		5 mA @ 24V DC max.
<b>VOLTAGE DROP</b>	3.5 V max.	0.5 V @ 50mA max.		0.1 V @ 100mA max.
<b>LEAKAGE CURRENT</b>	--	0.01 mA max.		--
<b>INDICATOR</b>	Yellow LED	Red LED	Yellow LED	
<b>CABLE</b>	ø2.5, 2C, PUR	ø2.5, 3C, PUR		
<b>OPERATING FREQUENCY</b>	200 Hz	1000 Hz		200 Hz
<b>MAGNET REQUIREMENT (NOTE 2)</b>	65 Gauss	40 Gauss		
<b>TEMPERATURE RANGE</b>	-10~70°C			
<b>SHOCK (NOTE 3)</b>	30 G	50 G		30 G
<b>VIBRATION (NOTE 4)</b>	9 G			
<b>ENCLOSURE CLASSIFICATION</b>	IEC 529 IP 67			
<b>PROTECTION CIRCUIT (NOTE 5)</b>	1	3,4		1

- NOTE:
1. WARNING: Never exceed rating (Watt=Voltage x Amperage). Permanent damage to sensor will occur.
  2. Measuring standard target: ø15.5Xø8X5t (Anisotropy rubber magnet)
  3. Sin wave / X, Y, Z 3 directions / 3 times each direction / 11 ms each time.
  4. Double amplitude 1.5 mm / 10Hz~55Hz~10Hz (Sweep 1 min) / X, Y, Z 3 directions / 1 hour each time.
  5. 1=None / 2=Short-circuit / 3=Power Source Reverse polarity / 4=Surge Suppression

### ■ GROOVE DIMENSION



Unit:mm

Pressure Switch  
Magnetic Switch  
Circular Connector