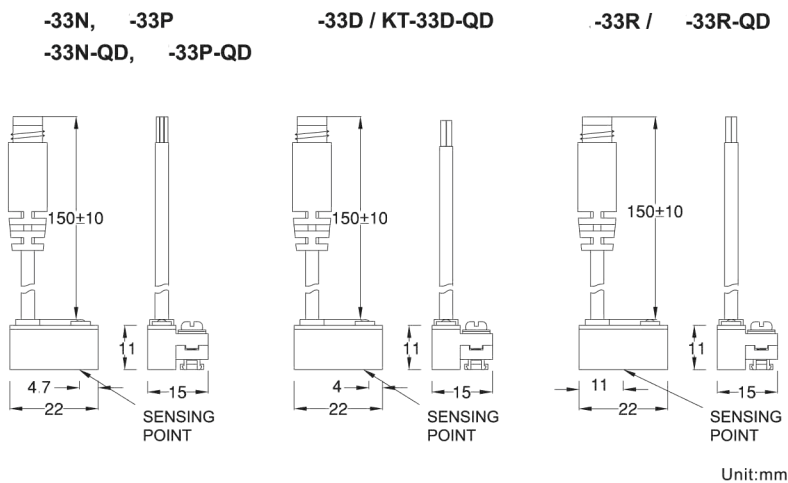
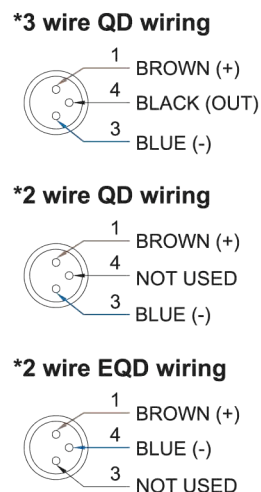


### ■ DIMENSION



### ■ QD PINOUT

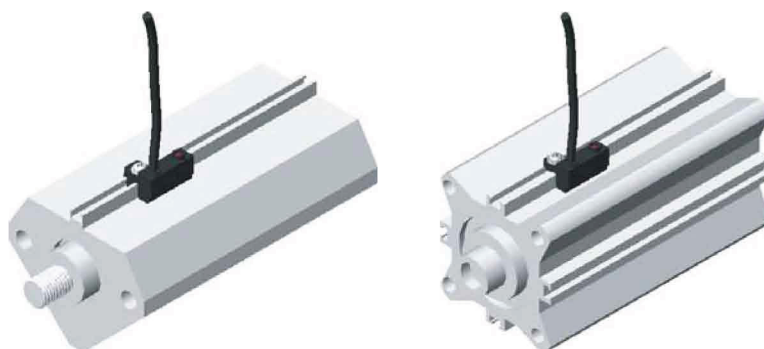
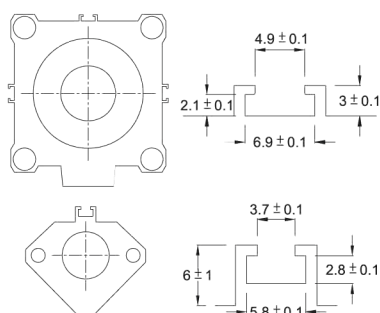


### ■ SPECIFICATION

TYPE	BTC-33R	BTC-33D	BTC-33N	BTC-33P
<b>CONNECT DIAGRAM</b>				
<b>CHARACTERISTICS</b>				
<b>WIRING METHOD</b>	2-Wire Type		3-Wire Type	
<b>SWITCHING LOGIC</b>	SPST, Normally Open		Solid State Output, Normally Open	
<b>SENSOR TYPE</b>	Reed Switch		NPN Current Sinking / PNP Current Sourcing	
<b>OPERATING VOLTAGE</b>	5~240V DC/AC		10~28V DC / 5~30V DC	
<b>SWITCHING CURRENT</b>	100 mA max.		4~40 mA max. / 200 mA max.	
<b>CONTACT RATING (NOTE 1)</b>	10 W max.		1.5 W max. / 6 W max.	
<b>CURRENT CONSUMPTION</b>	--		22 mA @ 24V DC max. / 20 mA @ 24V DC max.	
<b>VOLTAGE DROP</b>	3.5 V max.		0.5 V max.	
<b>LEAKAGE CURRENT</b>	--		1 mA max. / 0.01 mA max.	
<b>INDICATOR</b>	Red LED / Green LED		Red LED / Green LED	
<b>CABLE</b>	ø3.3, 2C, PVC		ø3.3, 3C, PVC	
<b>OPERATING FREQUENCY</b>	200 Hz		1000 Hz	
<b>MAGNET REQUIREMENT (NOTE 2)</b>	60 Gauss		40 Gauss	
<b>TEMPERATURE RANGE</b>	-10~70°C			
<b>SHOCK (NOTE 3)</b>	30 G		50 G	
<b>VIBRATION (NOTE 4)</b>	9 G			
<b>ENCLOSURE CLASSIFICATION</b>	IEC 529 IP 67			
<b>PROTECTION CIRCUIT (NOTE 5)</b>	1		4 / 3,4	

- NOTE:
1. WARNING: Never exceed rating (Watt=Voltage x Amperage). Permanent damage to sensor will occur.
  2. Measuring standard target: ø15.5Xø8X5t (Anisotropy rubber magnet)
  3. Sin wave / X, Y, Z 3 directions / 3 times each direction / 11 ms each time.
  4. Double amplitude 1.5 mm / 10Hz~55Hz~10Hz (Sweep 1 min) / X, Y, Z 3 directions / 1 hour each time.
  5. 1=None / 2=Short-circuit / 3=Power Source Reverse polarity / 4=Surge Suppression

### ■ GROOVE DIMENSION



Unit:mm

Pressure Switch  
Magnetic Switch  
Circular Connector