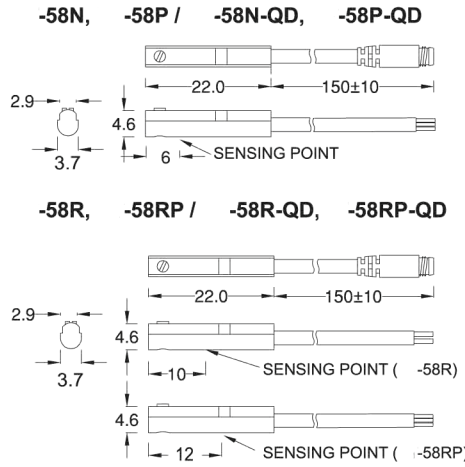
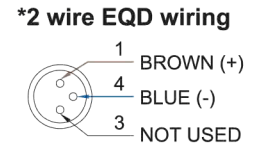
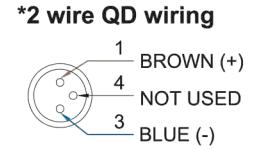
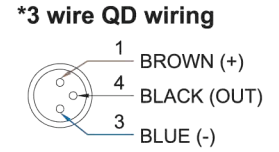




### ■ DIMENSION

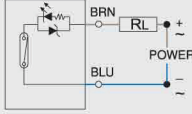
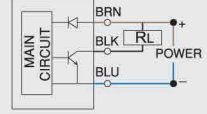
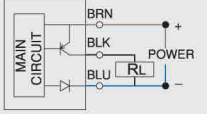
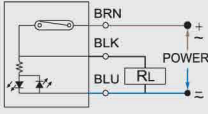


### ■ QD PINOUT



### ■ SPECIFICATION

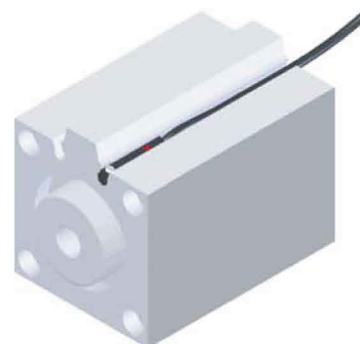
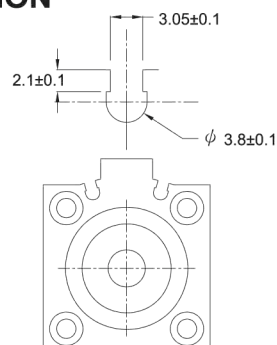
Unit:mm

| TYPE                               | BTC-58R  | BTC-58N  | BTC-58P  | BTC-58RP   |
|------------------------------------|--|--|--|--|
| <b>CONNECT DIAGRAM</b>             |  |  |  |  |
| <b>CHARACTERISTICS</b>             |  |  |  |  |
| <b>WIRING METHOD</b>               | 2-Wire Type  | 3-Wire Type  |  |  |
| <b>SWITCHING LOGIC</b>             | SPST, Normally Open  | Solid State Output, Normally Open  |  | SPST, Normally Open  |
| <b>SENSOR TYPE</b>                 | Reed Switch  | NPN Current Sinking  | PNP Current Sourcing   | Reed Switch  |
| <b>OPERATING VOLTAGE</b>           | 5~120V DC/AC   | 10~30V DC  |  | 10~30V DC/AC   |
| <b>SWITCHING CURRENT</b>           | 100 mA max.  | 200 mA max.  |  | 500 mA. max.   |
| <b>CONTACT RATING (NOTE 1)</b>     | 10 W max.  | 6 W max.   |  | 10 W max.  |
| <b>CURRENT CONSUMPTION</b>         | --   | 10 mA @ 24V DC max.  |  | 5 mA @ 24V DC max.   |
| <b>VOLTAGE DROP</b>                | 3.5 V max.   | 0.5 V @ 50mA max.  |  | 0.1 V @ 100mA max.   |
| <b>LEAKAGE CURRENT</b>             | --   | 0.01 mA max.   |  | --   |
| <b>INDICATOR</b>                   | Yellow LED   | Red LED  | Yellow LED   |  |
| <b>CABLE</b>                       | ø2.5, 2C, PUR  | ø2.5, 3C, PUR  |  |  |
| <b>OPERATING FREQUENCY</b>         | 200 Hz   | 1000 Hz  |  | 200 Hz   |
| <b>MAGNET REQUIREMENT (NOTE 2)</b> | 65 Gauss   | 40 Gauss   |  |  |
| <b>TEMPERATURE RANGE</b>           | -10~70°C   |  |  |  |
| <b>SHOCK (NOTE 3)</b>              | 30 G   | 50 G   |  | 30 G   |
| <b>VIBRATION (NOTE 4)</b>          | 9 G  |  |  |  |
| <b>ENCLOSURE CLASSIFICATION</b>    | IEC 529 IP 67  |  |  |  |
| <b>PROTECTION CIRCUIT (NOTE 5)</b> | 1  | 3,4  |  | 1  |

#### NOTE:

1. WARNING: Never exceed rating (Watt=Voltage x Amperage). Permanent damage to sensor will occur.
2. Measuring standard target: ø15.5Xø8X5t (Anisotropy rubber magnet)
3. Sin wave / X, Y, Z 3 directions / 3 times each direction / 11 ms each time.
4. Double amplitude 1.5 mm / 10Hz~55Hz~10Hz (Sweep 1 min) / X, Y, Z 3 directions / 1 hour each time.
5. 1=None / 2=Short-circuit / 3=Power Source Reverse polarity / 4=Surge Suppression

### ■ GROOVE DIMENSION



Unit:mm

Pressure Switch

Magnetic Switch

Circular Connector