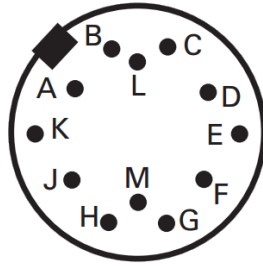
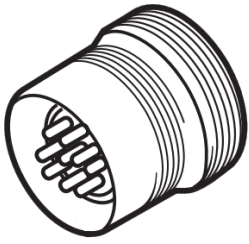
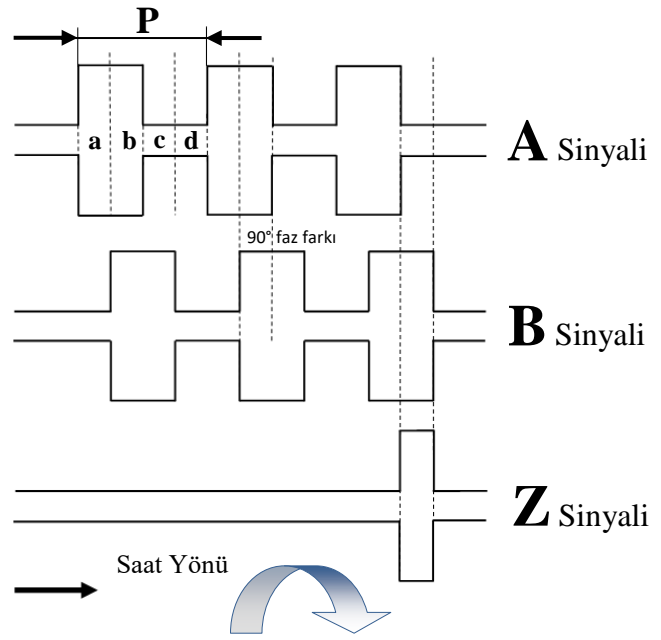




Sinyal	Kablo Rengi	Soket Pin Numarası
A	SARI	E
/B	BEYAZ	A
+VCC Besleme	KIRMIZI	B - M
0 V	SİYAH	K-L
/A	MAVİ	F
B	YEŞİL	H
/Z	GRİ	D
Z	PEMBE	C
TOPRAK	SHIELD	Soket gövdesi



## Sipariş Detayı

### Çalışma Prensibi

S : MANYETİK  
C : OPTİK

### Şaft tipi

S : Şaftlı

**Gövde Çapı**  
058 : 58 mm

### Çözünürlük

Standart 1024 = 1024 pulse  
\*\*Diğer pulse seçenekleri 4 pulse  
4096 pulse arasında seçilebilir.

### Sinyal Çıkış

6 : A, /A, B, /B, Z, /Z  
2 : A, B  
3 : A, B, Z  
4 : A, /A, B, /B

### Kablo Yönü

A : Arkadan Çıkış  
Y : Yandan Çıkış  
S : Soketli

### Besleme ve Çıkış Tipi

PP ( PUSH PULL ) : 10...30 VDC Besleme  
: 10...30 VDC Push-Pull Çıkış  
TTL : 5 VDC Besleme  
: 5 VDC TTL RS422 Line Driver Çıkış  
HPL : 5...30 VDC Besleme  
: 5...30 VDC Push-Pull Çıkış

### Kablo Uzunluğu

S16 : 12 PIN (M16 SOKET)  
5M : 5 M  
10M : 10 M

\*Opsiyonel olarak  
istenilen boylarda yapılır.

### Özel imalat Serisi

Özel dizayn mil ana gövde 12 mm ,  
uç bölümü vidalı tip 8 mm

1XP8001-1 Besleme: 10...30VDC  
1XP8001-2 Besleme: 5VDC

# INCREMENTAL ROTARY ENCODER "Special Manufacturing Series"

**BTC-1XP8001-1**  
**BTC-1XP8001-2**



## FEATURES

- Magnetic (BTC) or Optic (BTC) principle measurement systems
- Special spindle with special screw
- 58mm body diameter
- 1024 pulse resolution
- With special socket connection or optional cable
- Reverse polarity and short circuit protection
- High operating speed 6000 RPM

The BTC / BTC-1XP8001 series has a specially manufactured shaft structure. The main body of the shaft is 12 mm and the end part is a 8 mm thread. The products have a standard diameter of 58mm.

Especially automation applications that require motor speed control, speed measurement, length measurement, all sorts of machinery sector etc. are frequently used.

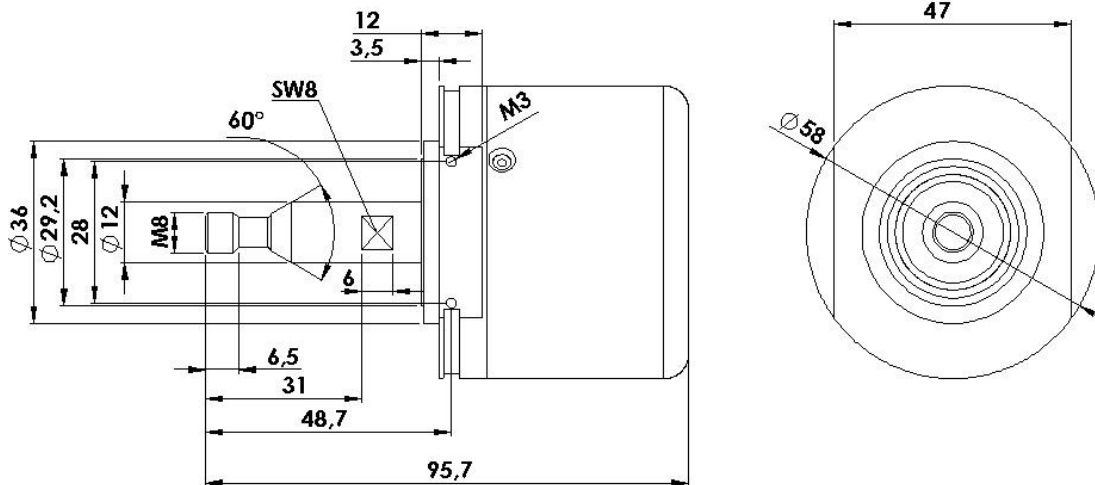
## USED SECTORS

- Motor Speed Control
- Textile Machinery
- All kinds of Automation Applications

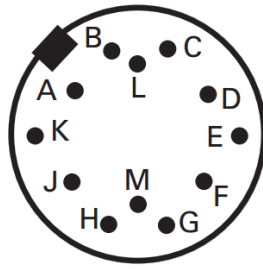
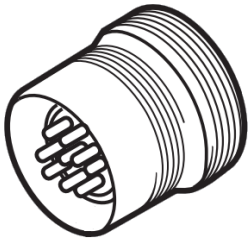
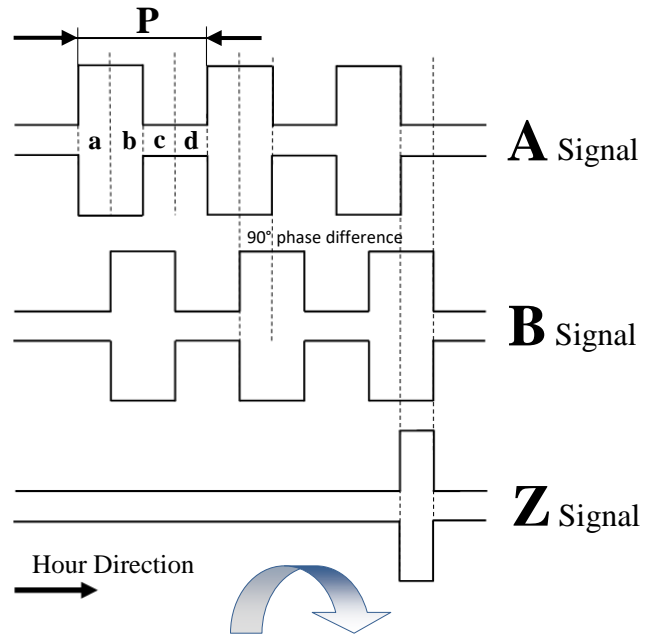
## Technical specifications

<b>Resolution/ per tour</b>	Standard 1024 pulse (other options optional)
<b>Operating Principle</b>	BTC Series : Magnetik BTC Series : Optic
<b>Output Signal Type</b>	Push-Pull or TTL RS422 Line Driver
<b>Electrical Connexion</b>	Standard M16 12 pin socket, other models optional
<b>Output Signals</b>	A B Z /A /B /Z
<b>Input Current</b>	Max. 60 mA per channel
<b>Supply</b>	10...30 VDC $\pm$ 20% , 5 VDC $\pm$ 5% , 5...24 VDC $\pm$ 20% , 5...30 VDC $\pm$ 20%
<b>Connection Class</b>	Reverse polarity and short circuit protection are available.
<b>Response Frequency</b>	50 – 300KHZ
<b>Mechanical Measurements</b>	
<b>Shaft Type</b>	Special type with screw
<b>Mechanical Measurements</b>	58 mm body diameter
<b>Operating Temperature</b>	-25°...+85°
<b>Starting Torque</b>	0,5Ncm
<b>Body</b>	Main body: Steel Sheet Flange: Aluminum
<b>Maximum Operating Speed</b>	6000 RPM
<b>Protection Class</b>	IP54
<b>Weight</b>	250 gram

## Mechanical Measurements



Signal	Cable Color	Socket Pin Number
A	YELLOW	E
/B	WHITE	A
+VCC Supply	RED	B - M
0 V	BLACK	K-L
/A	BLUE	F
B	GREEN	H
/Z	GREY	D
Z	PINK	C
GND	SHIELD	Socket body



## Sipariş Detayı

### Operating Principle

M: MAGNETIC  
C: OPTIC

### Shaft type

S: Shaft

Body Diameter  
058 : 58 mm

### Resolution

Standard 1024 = 1024 pulse

\*\* Other pulse options can be selected from 4 pulse 4096 pulse.

### Output Signals

6 : A, /A, B, /B, Z, /Z  
2 : A, B  
3 : A, B, Z  
4 : A, /A, B, /B

### Cable Direction

A : Backside  
Y : Sidewise  
AS : Backside + Spiral

### Feed and Output Type

PP (PUSH PULL) : 10 ... 30 VDC Supply  
: 10 ... 30 VDC Push-Pull Output  
TTL : 5 VDC Supply  
: 5 VDC TTL RS422 Line Driver Output  
HPL : 5 ... 30 VDC Supply  
: 5 ... 30 VDC Push-Pull Output

### Cable Length

S16 : 12 PIN (M16 SOCKET)  
5M : 5 M  
10M : 10 M

\* Optionally, it is done in the desired length.

### Special production series

Specially designed shaft main body 12 mm, end section with threaded type 8 mm

BTC-1XP8001-1 Feed: 10-30VDC  
BTC-1XP8001-2 Feed: 5VDC