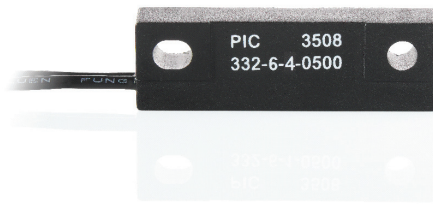


## MS-332-6



## MS-332-6

### Power Reed Sensor Flatpack

#### Electrical Characteristics @ 25 °C

Contact form		A
Contact rating max.	W / VA	50
Switching voltage max.	VDC	200
	VAC	250
Switching current max.	A	1.5
	A	2
Carry current max.	A	2
Breakdown voltage min.	VDC	400
Total resistance max. (initial)	mΩ	200
Insulation resistance min.	Ω	10 <sup>10</sup>

#### Features

- Sensor with Power Reed Switch
- Adjustable switching point
- Various sensitivity ranges available
- Customized types available

#### Magnetical Characteristics (of unmodified Reed Switch) @ 25 °C

Pull in range available	AT	25 - 40
Drop out min.	AT	5
Test coil	TC -	020
Test equipment tolerance	± AT	2

#### Approvals

RoHS

REACH



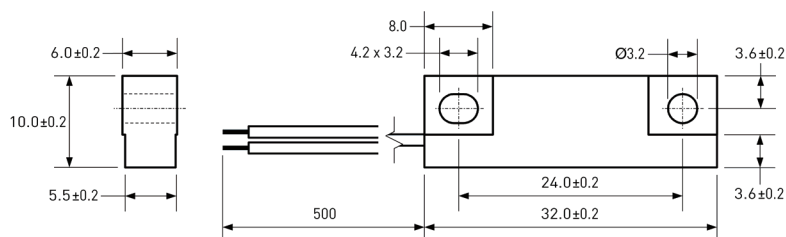
#### Operating Characteristics (of unmodified Reed Switch) @ 25 °C

Switching frequency max.	Hz	300
Resonant frequency typ.	Hz	2600
Operate time max. (incl. bounce)	ms	1
Release time max.	ms	0.4

#### Environmental Characteristics

Operating temperature	°C	-20 to + 85
Vibration (50-2000 Hz)	g	20
Shock (1/2 sin 11 ms)	g	50

#### Dimensions in mm



#### Ordering Information

Packing Unit	50 pcs
Weight per piece	5.8 g
Weight per package	300 g
Standard AT Ranges	
	4= 25 to 30 AT
	5= 30 to 35 AT
	6= 35 to 40 AT

#### Ordering Example

MS-332-6-4 describes MS-332-6 with 25 to 30 AT.

MS-332-6

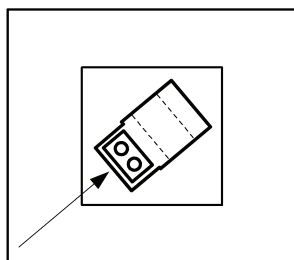
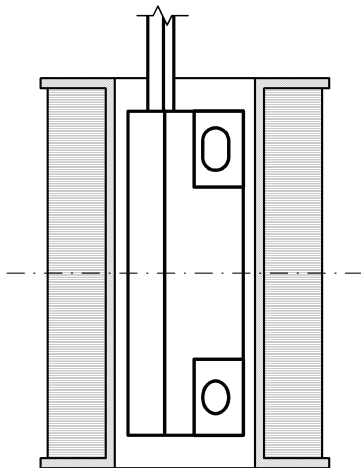


**MS-332-6**  
Power Reed Sensor Flatpack

Material Information

	Material	Colour
Housing	ABS	black
Cable	UL 1007/1569, AWG 24, 4 mm stripped and tinned	black
Potting compound	Epoxy	black

Test Procedure of final Reed Sensor



Test Coil placed in vertical position

Reed Sensor diagonally centered in Test Coil

Test Parameters

Test coil	TC-324
Test programs	
AT range	Test program
4 =	MS-332-6-4
5 =	MS-332-6-5
6 =	MS-332-6-6

Remarks

When mounted onto ferromagnetic parts switching distance of MS-332-6 may reduce.  
Electromagnetical influences and magnetic fields may change the switching behaviour of the sensor.

Only non-ferromagnetic screws to be used for mounting.

Matching actuator MSM-332 available as well.