

SK280MB10



SEMITOP® 3

Half-Bridge (MOSFET module)

SK280MB10

Features*

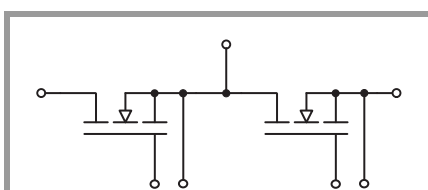
- One screw mounting module
- Low inductive design
- Heat transfer and isolation through direct copper bonded aluminium oxide ceramic (DCB)
- 100V Trench MOS technology
- UL recognized file no. E 63 532

Typical Applications

- Switched Mode Power Supplies

Remarks

Recommended driving for optimal switching performances: $V_{GS}=0/10V$



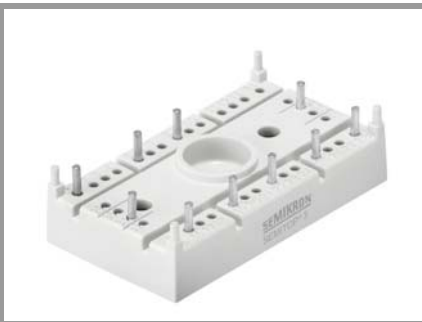
MB

Absolute Maximum Ratings				
Symbol	Conditions	Values	Unit	
MOSFET 1				
V_{DSS}		100	V	
I_D	$T_j = 175\text{ °C}$	$T_s = 25\text{ °C}$	335	A
		$T_s = 70\text{ °C}$	280	A
I_{DM}		960	A	
I_{DRM}		320	A	
V_{GS}		-20 ... 20	V	
T_j		-40 ... 175	°C	
Integrated body diode				
I_{FM}		960	A	
I_{FRM}		320	A	

Absolute Maximum Ratings			
Symbol	Conditions	Values	Unit
Module			
$I_{t(RMS)}$	$\Delta T_{\text{terminal}}$ at PCB joint = 30 K, per pin	60	A
T_{stg}		-40 ... 125	°C
V_{isol}	AC, sinusoidal, t = 1 min	2500	V

Characteristics					
Symbol	Conditions	min.	typ.	max.	Unit
MOSFET 1					
$V_{(BR)DSS}$	$V_{GS} = 0\text{ V}$, $I_D = 1\text{ mA}$, $T_j = 25\text{ °C}$	100			V
$V_{GS(th)}$	$V_{DS} = V_{GS}$, $I_D = 0.55\text{ mA}$, $T_j = 25\text{ °C}$	2	2.7	3.5	V
I_{DSS}	$V_{GS} = 0\text{ V}$, $V_{DS} = 100\text{ V}$, $T_j = 25\text{ °C}$			0.2	mA
I_{GSS}	$V_{DS} = 0\text{ V}$, $V_{GS} = 20\text{ V}$, $T_j = 25\text{ °C}$			200	nA
$R_{DS(on)}$	$V_{GS} = 10\text{ V}$ $I_D = 200\text{ A}$ chipelevel	$T_j = 25\text{ °C}$	1.15	1.35	mΩ
		$T_j = 150\text{ °C}$	2.1		mΩ
C_{iss}	$V_{GS} = 0\text{ V}$, $V_{DS} = 50\text{ V}$, f = 1 MHz		22200		pF
C_{oss}	$V_{GS} = 0\text{ V}$, $V_{DS} = 50\text{ V}$, f = 1 MHz		3880		pF
C_{rss}	$V_{GS} = 0\text{ V}$, $V_{DS} = 50\text{ V}$, f = 1 MHz		138		pF
R_{Gint}	$T_j = 25\text{ °C}$		4		Ω
Q_G	$V_{GS} = 0...+15\text{ V}$, $V_{DD} = 50\text{ V}$, $I_D = 200\text{ A}$		530		nC
$t_{d(on)}$	$V_{DD} = 50\text{ V}$		190		ns
$t_{d(off)}$	$V_{GS} = 15/0\text{ V}$ $I_D = 200\text{ A}$	$T_j = 150\text{ °C}$		1000	ns
		$T_j = 150\text{ °C}$			
t_r	$R_{G\ on/off} = 15\text{ Ω}$		133		ns
t_f	$di/dt_{off} = 1.6\text{ kA}/\mu\text{s}$		97		ns
E_{on}	$di/dt_{on} = 1.4\text{ kA}/\mu\text{s}$		0.2		mJ
E_{off}	$dv/dt = 637\text{ kV}/\mu\text{s}$		2.1		mJ
$R_{th(j-s)}$	per MOSFET, $\lambda_{paste} = 0.8\text{ W}/(\text{mK})$		0.47		K/W
Integrated body diode					
$V_F = V_{SD}$	$-I_D = 200\text{ A}$ $V_{GS} = 0\text{ V}$ chipelevel	$T_j = 25\text{ °C}$	0.88		V
		$T_j = 150\text{ °C}$	0.77		V
$V_{F0} = V_{SD0}$	chipelevel	$T_j = 25\text{ °C}$	0.71		V
		$T_j = 150\text{ °C}$	0.53		V
$r_F = r_{SD}$	chipelevel	$T_j = 25\text{ °C}$	0.85		mΩ
		$T_j = 150\text{ °C}$	1.20		mΩ
t_{rr}	$V_{DD} = 50\text{ V}$	$T_j = 150\text{ °C}$	90		ns
Q_{rr}	$-I_D = 200\text{ A}$	$T_j = 150\text{ °C}$	2.7		μC
I_{rr}	$di/dt_{off} = 1.4\text{ kA}/\mu\text{s}$	$T_j = 150\text{ °C}$	60		A
E_{rr}	$V_{GS} = 0\text{ V}$	$T_j = 150\text{ °C}$	0.1		mJ

SK280MB10



SEMITOP® 3

Half-Bridge (MOSFET module)

SK280MB10

Features*

- One screw mounting module
- Low inductive design
- Heat transfer and isolation through direct copper bonded aluminium oxide ceramic (DCB)
- 100V Trench MOS technology
- UL recognized file no. E 63 532

Typical Applications

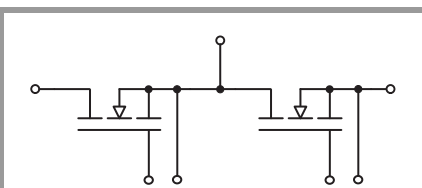
- Switched Mode Power Supplies

Remarks

Recommended driving for optimal switching performances: $V_{GS}=0/10V$

Characteristics

Symbol	Conditions	min.	typ.	max.	Unit
Module					
L_{CE}			5		nH
M_s	to heatsink	2.25		2.5	Nm
w	weight		29		g



MB

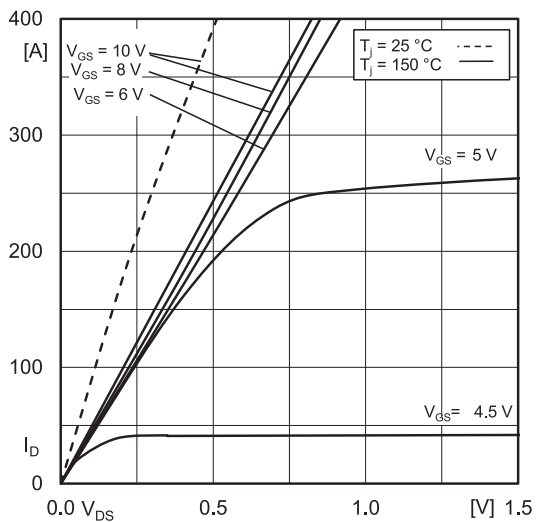


Fig. 1: Typ. MOSFET forward output characteristic, incl. $R_{D D'+SS'}$

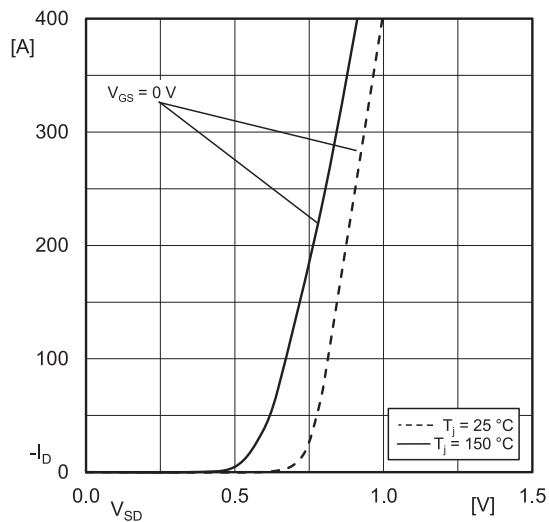


Fig. 2: Typ. reverse output characteristic, incl. $R_{D D'+SS'}$

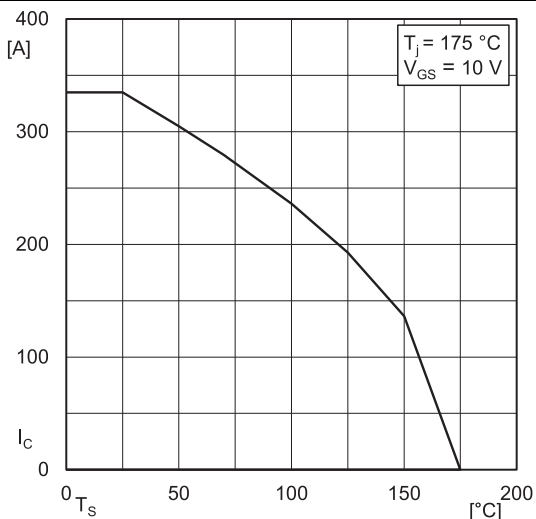


Fig. 3: Rated current vs. temperature $I_D = f(T_S)$

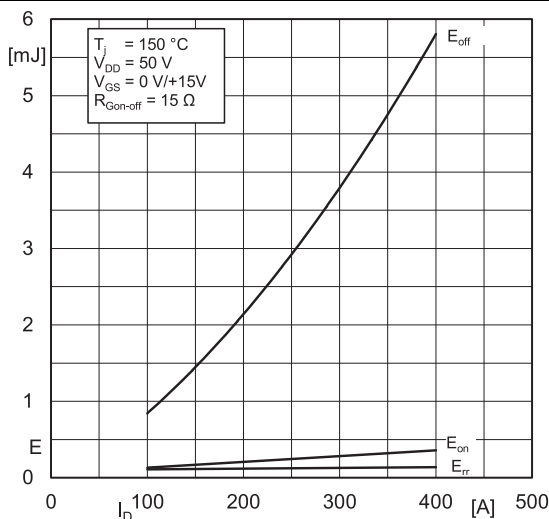


Fig. 4: Typ. turn-on/-off energy $E = f(I_D)$

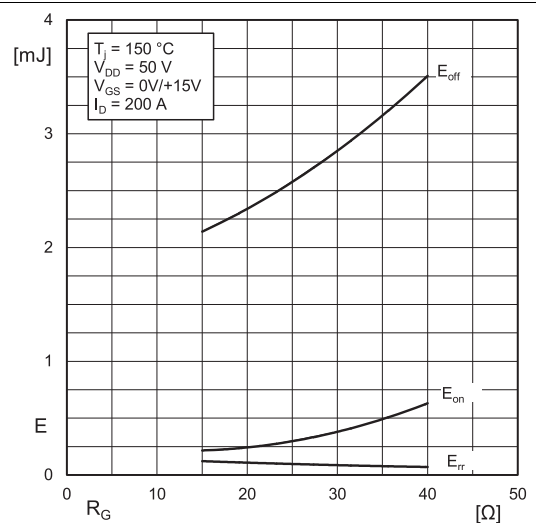


Fig. 5: Typ. turn-on /-off energy $E = f(R_G)$

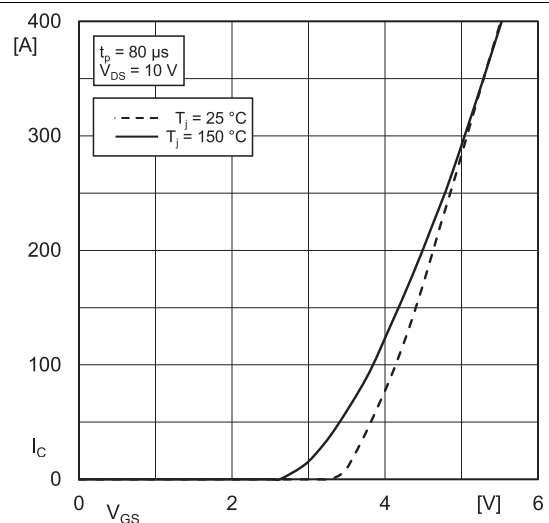


Fig. 6: Typ. MOSFET transfer characteristic

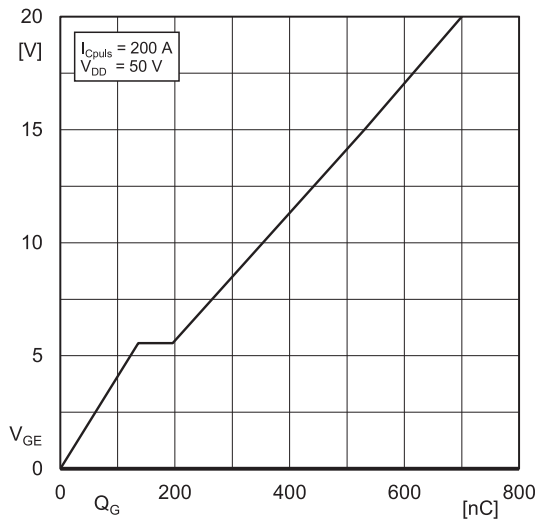


Fig. 7: Typ. MOSFET gate charge characteristic

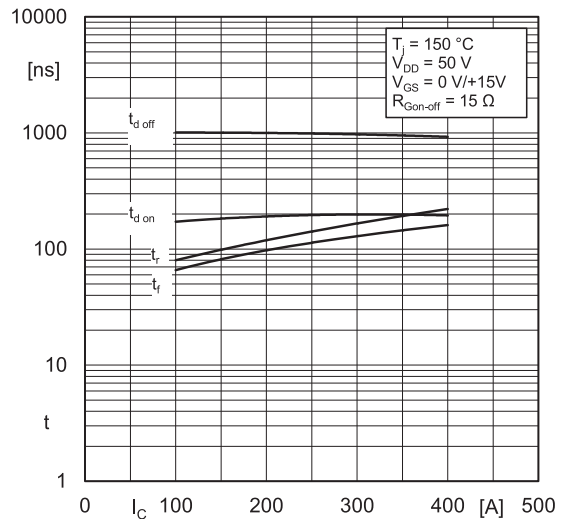


Fig. 8: Typ. switching times vs. I_D

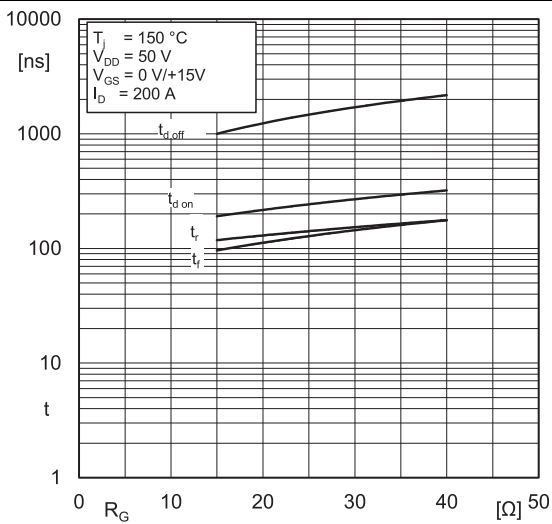


Fig. 9: Typ. switching times vs. gate resistor R_G

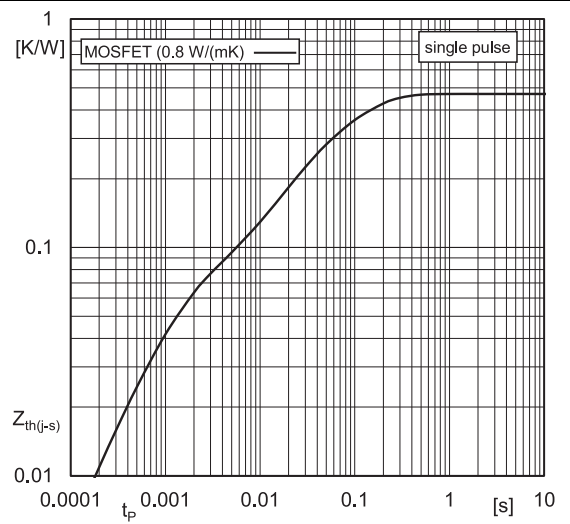
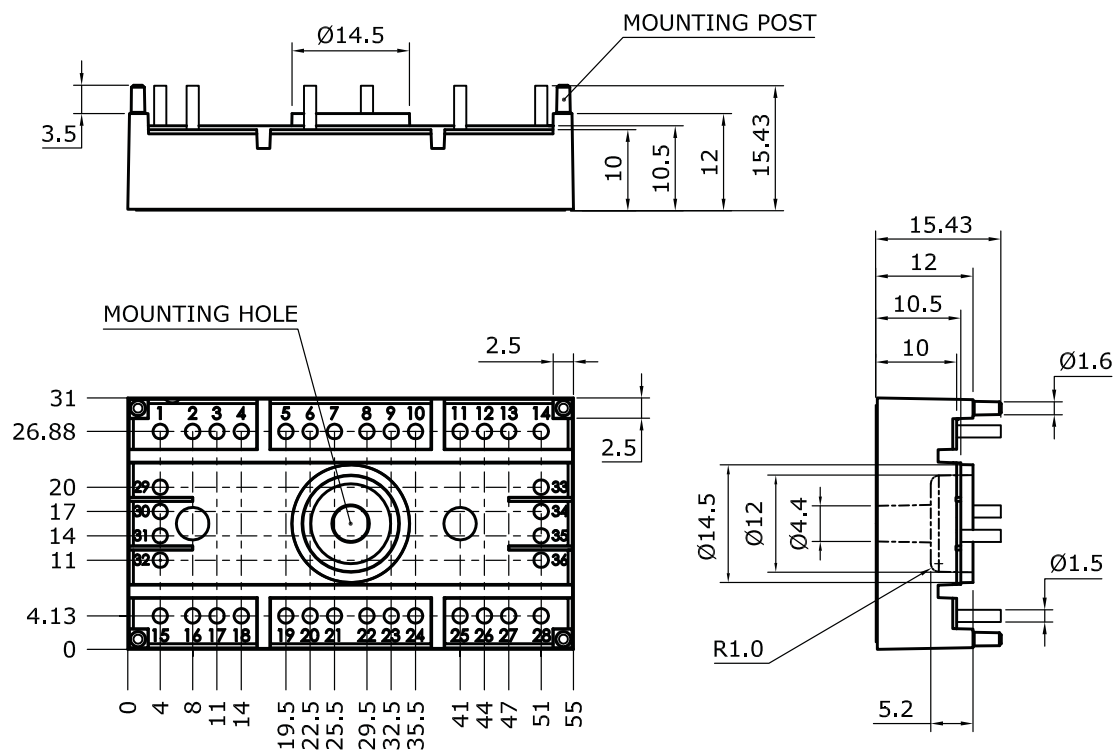


Fig. 10: Typ. transient thermal impedance

SK280MB10

Dimensions: mm

Tolerance system: ISO 2768-m



Suggested hole diameter for solder pins in the circuit board:

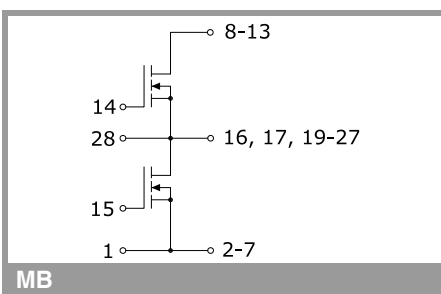
- 2.0 mm

Suggested hole diameter for the mounting post in the circuit board:

- 2.0 mm

These documents are SEMIKRON properties. SEMIKRON reserves all copyrights. All copying and transmitting of this information requires written permission. For the case of industrial property rights, SEMIKRON reserves all rights.

SEMITOP®3



MB

This is an electrostatic discharge sensitive device (ESDS) due to international standard IEC 61340.

***IMPORTANT INFORMATION AND WARNINGS**

The specifications of SEMIKRON products may not be considered as guarantee or assurance of product characteristics ("Beschaffenheitsgarantie"). The specifications of SEMIKRON products describe only the usual characteristics of products to be expected in typical applications, which may still vary depending on the specific application. Therefore, products must be tested for the respective application in advance. Application adjustments may be necessary. The user of SEMIKRON products is responsible for the safety of their applications embedding SEMIKRON products and must take adequate safety measures to prevent the applications from causing a physical injury, fire or other problem if any of SEMIKRON products become faulty. The user is responsible to make sure that the application design is compliant with all applicable laws, regulations, norms and standards. Except as otherwise explicitly approved by SEMIKRON in a written document signed by authorized representatives of SEMIKRON, SEMIKRON products may not be used in any applications where a failure of the product or any consequences of the use thereof can reasonably be expected to result in personal injury. No representation or warranty is given and no liability is assumed with respect to the accuracy, completeness and/or use of any information herein, including without limitation, warranties of non-infringement of intellectual property rights of any third party. SEMIKRON does not assume any liability arising out of the applications or use of any product; neither does it convey any license under its patent rights, copyrights, trade secrets or other intellectual property rights, nor the rights of others. SEMIKRON makes no representation or warranty of non-infringement or alleged non-infringement of intellectual property rights of any third party which may arise from applications. Due to technical requirements our products may contain dangerous substances. For information on the types in question please contact the nearest SEMIKRON sales office. This document supersedes and replaces all information previously supplied and may be superseded by updates. SEMIKRON reserves the right to make changes.