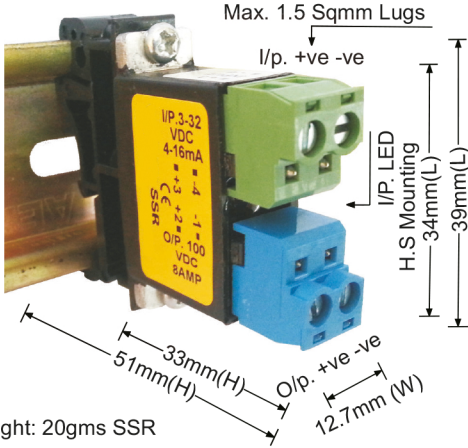




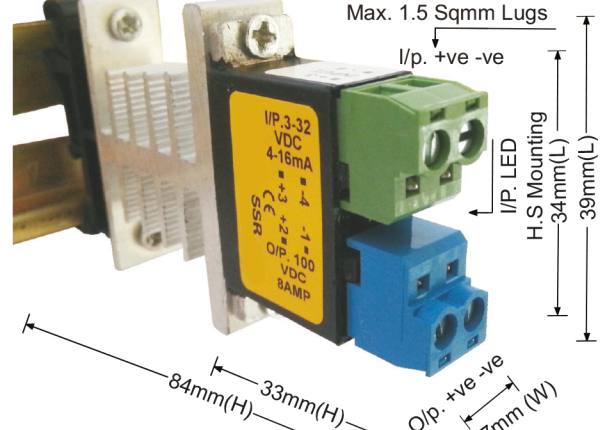
VALF KONTROL - SOLID STATE RELAY (SSR) PLC ÇIKIŞ RÖLESİ

biltec TYP BTC8DC100 DC-DC Input:4-32VDC / Output:5-100VDC



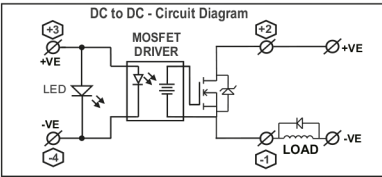
Weight: 20gms SSR

8Amp
Input : 4-32VDC/4-16mA - Plug in type
Input LED Indication : **Green**
Output : 5-100VDC - Plug in type
ON State Voltage Drop : $\leq 0.3Vdc$
Body isolation : 3kV for 1min
I/P. to O/P. isolation : 2.5kV for 1min
Load Current : 4Amp @55 °C
Turn ON time : 2.5 mS, Turn OFF time : 40 μ S
No Leakage Current at output side



8Amp
Input : 4-32VDC/4-16mA - Plug in type
Input LED Indication : **Green**
Output : 5-100VDC - Plug in type
ON State Voltage Drop : $\leq 0.8Vdc$
Body isolation : 3kV for 1min
I/P. to O/P. isolation : 2.5kV for 1min
Load Current : 8Amp @55 °C
With Heat Sink G-12.5 + Din
Turn ON time : 2.5 mS
Turn OFF time : 40 μ S
No leakage current at output side

Weight: 20gms SSR
19gms Heat sink



Across the Load Back EMF Diode is must for high frequency ON/OFF

807 Model Dimension

