

BTC-32-EX SERIES



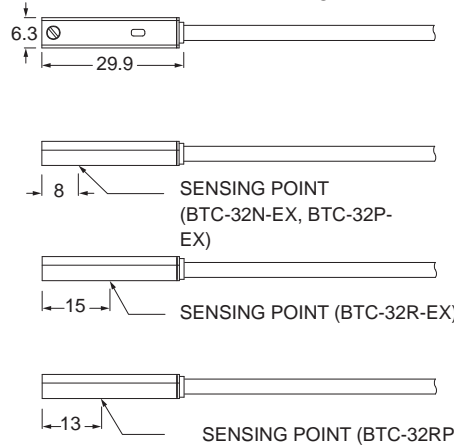
Explosion Proof

Dimensions

M8 Connector option is not available



BTC-32R-EX, BTC-32N-EX, BTC-32P-EX, BTC-32RP-EX



EX) Unit : mm

Specifications

MODEL	BTC-32R-EX	BTC-32N-EX	BTC-32P-EX	BTC-32RP-EX
Connect Diagram				
Characteristics				
Wiring Method	2-Wire Type	3-Wire Type		
Switching Logic	SPST, Normally Open	Solid State Output, Normally Open		SPST, Normally Open
Sensor Type	Reed Switch	NPN Current Sinking	PNP Current Sourcing	Reed Switch
Operating Voltage	5 ~ 30 V DC / AC	10 ~ 30 V DC		10 ~ 30 V DC / AC
Switching Current		100 mA max.		500 mA max.
Contact Rating ※1	10 W max.	3 W max.		10 W max.
Current Consumption	-	17 mA @ 24 V DC max.	8 mA @ 24 V DC max.	10 mA @ 24 V DC max.
Voltage Drop	3.5 V max.	1.5 V max.		0.1 V @ 100 mA max.
Leakage Current	-	0.01 mA max.		-
Indicator	Red LED		Yellow LED	
Cable	Ø3.3 PVC - 24 AWG (0.22 mm ²) - 2 cores		Ø3.2 PVC - 24 AWG (0.22 mm ²) - 3 cores	
Operating Frequency	200 Hz	1000 Hz		200 Hz
Magnet Requirement ※2	70 Gauss	60 Gauss		
Temperature Range	-10 ~ 70 °C			
Shock ※3	30 G	50 G		30 G
Vibration ※4	9 G			
Enclosure Classification	IEC 60529 IP67			
Protection Circuit ※5	1	2, 3, 4		1
CE ATEX APPROVAL Baseefa14ATEX0118	Ex II 3GD Ex ic IIB T4 Gc (-10 °C ≤ Ta ≤ +70 °C) Ex ic IIIC T135° C Dc (-10 °C ≤ Ta ≤ +70 °C)			

NOTE

※1 : WARNING : Never exceed rating (Watt = Voltage x Amperage). Permanent damage to sensor will occur.

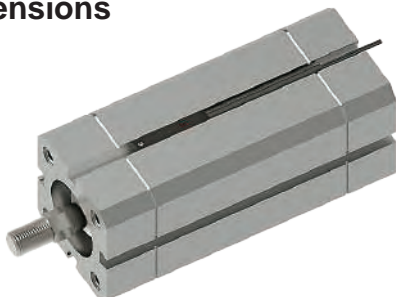
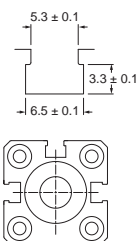
※2 : Measuring standard target : Ø15.5 × Ø8 × 5t (Anisotropy rubber magnet)

※3 : Sin wave / X , Y , Z 3 directions / 3 times each direction / 11 ms each time.

※4 : Double amplitude 1.5 mm / 10 Hz ~ 55 Hz ~ 10 Hz (Sweep 1 min) / X , Y , Z 3 directions / 1 hour each time.

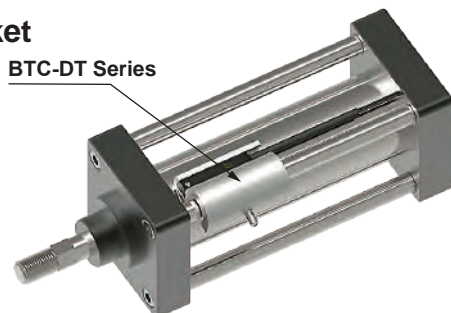
※5 : 1 = None / 2 = Short-circuit / 3 = Power Source Reverse polarity / 4 = Surge Suppression

Groove Dimensions



Bracket

BTC-DT Series



Unit : mm