

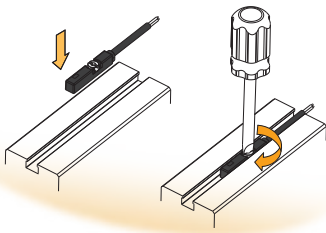
# BTC-65-EX SERIES

**biltec**<sup>®</sup>



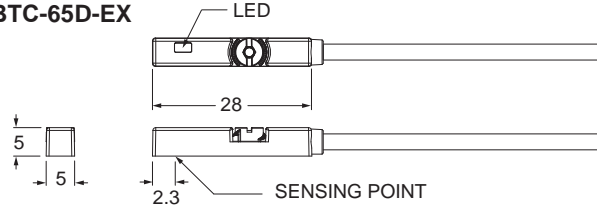
**Explosion Proof**

**Patented**

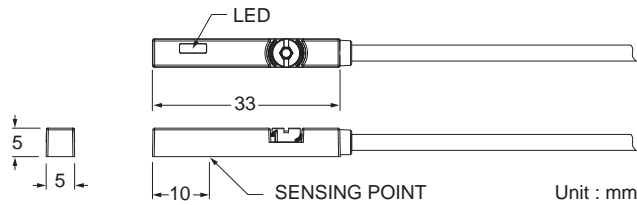


## Dimensions

**BTC-65N-EX, BTC-65N-NC-EX,  
BTC-65P-EX, BTC-65P-NC-EX,  
BTC-65D-EX**



**BTC-65R-EX, BTC-65RP-EX**



**M8 Connector option is not available**

## Specifications

MODEL	BTC-65R-EX	BTC-65D-EX	BTC-65N-EX	BTC-65N-NC-EX	BTC-65P-EX	BTC-65P-NC-EX	BTC-65RP-EX
<b>Connect Diagram</b>							
<b>Characteristics</b>	2-Wire Type		3-Wire Type				
<b>Wiring Method</b>	2-Wire Type		3-Wire Type				
<b>Switching Logic</b>	SPST, Normally Open	Solid State Output, Normally Open	Solid State Output, Normally Close		Solid State Output, Normally Open	Solid State Output, Normally Close	SPST, Normally Open
<b>Sensor Type</b>	Reed Switch	-	NPN Current Sinking		PNP Current Sourcing		Reed Switch
<b>Operating Voltage</b>	5 ~ 30 V DC / AC		10 ~ 28 V DC				10 ~ 30 V DC / AC
<b>Switching Current</b>	100 mA max.	50 mA max.	200 mA max.		500 mA max.		500 mA max.
<b>Contact Rating</b> ※1	10 W max.	1.5 W max.	5.5 W max.		10 W max.		10 W max.
<b>Current Consumption</b> ※2	-		10 mA @ 24 V DC max.				
<b>Voltage Drop</b> ※2	3.0 V max.	3.5 V max.	1.5 V max.		0.1 V @ 100 mA max.		0.1 V @ 100 mA max.
<b>Leakage Current</b> ※2	-	0.8 mA max.	0.05 mA max.		-		-
<b>Indicator</b>	Red LED				Yellow LED		
<b>Lead Wire</b>	Ø2.8 PUR - 26 AWG (0.15 mm <sup>2</sup> ) - 2 cores		Ø2.8 PUR - 26 AWG (0.15 mm <sup>2</sup> ) - 3 cores				
<b>Operating Frequency</b>	200 Hz		1000 Hz				200 Hz
<b>Magnet Requirement</b> ※2,3	65 Gauss		50 Gauss				65 Gauss
<b>Temperature Range</b>			-10 ~ 70 °C				
<b>Shock</b> ※4	30 G		50 G				30 G
<b>Vibration</b> ※5			9 G				
<b>Enclosure</b>	IEC 60529 IP67						
<b>Protection Circuit</b> ※6	1	2	2, 3, 4				1
<b>CE ATEX APPROVAL</b>	Ⓜ II 3 GD Ex ic IIB T4 Gc (-10 °C ≤ Ta ≤ +70 °C) Ex ic IIIC T135 °C Dc (-10 °C ≤ Ta ≤ +70 °C)						

### NOTE

※1 : WARNING : Never exceed rating ( Watt = Voltage × Amperage ). Permanent damage to sensor will occur.

※2 : It bases on conditions of voltage 24 V DC, ambient temp. 25 °C and 2 meters cable of sensor. Voltage drop increases in pace with cable length.

※3 : Measuring standard target : Ø15.5 × Ø8 × 5t ( Anisotropy rubber magnet )

※4 : Sin wave / X, Y, Z 3 directions / 3 times each direction / 11 ms each time.

※5 : Double amplitude 1.5 mm / 10 Hz ~ 55 Hz ~ 10 Hz ( Sweep 1 min ) / X, Y, Z 3 directions / 1 hour each time.

※6 : 1 = None / 2 = Short-circuit / 3 = Power Source Reverse polarity / 4 = Surge Suppression

**BTC-65 series can be applied to many kind of cylinders**

