

# CS - 120 series - Sensor switch

CHELIC PNEUMATIC



## ◉ Suitable for cylinder

Model	Cylinder	Bore size
CS-120	SBA,SBB,SBD	Ø10 , Ø16
	SBR	Ø6 , Ø10 , Ø16
	SDA	Ø12~Ø40

## ◉ Reed sensor switch

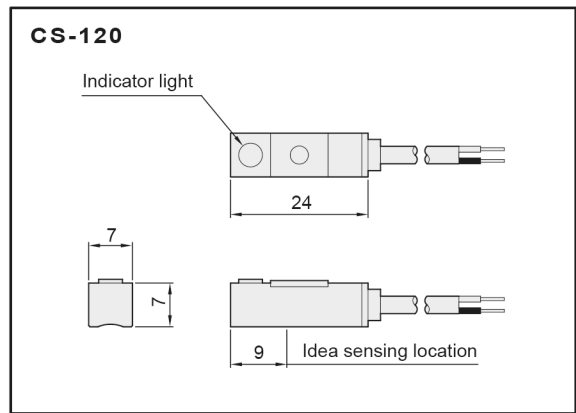
## ◉ Specification

Item	Model	CS-120 - □
Wiring system		Two lead wire type
Switching voltage	V	DC : 5 ~ 240V AC : 5 ~ 240V
Switching current	mA	100mA MAX.
Contact capacity		10W MAX.
Delay time		< 2ms (500 Hz)
Contact		Normal open
Protection grade		IP-67
Color of indicator light		Red
Cable		Ø4 Wire cable x 2M
Voltage drop		3V MAX.
Sensitivity	Note	Normal
Contact protective circuit		Non
Operating temp	°C	-10° ~ 70°
Weight	g	25 ± 2

Note : For high sensitivity, add "-S" to the port number.

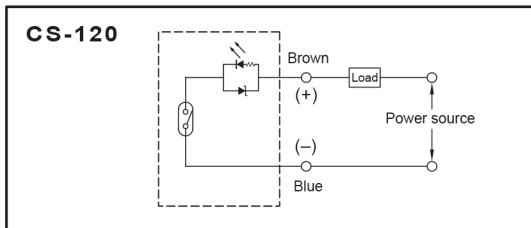
## ◉ Dimension

Unit : mm

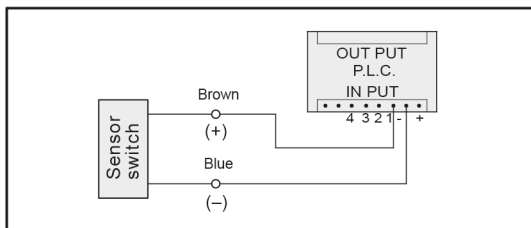


## ◉ Sensor switch circuit and Connection diagram ◉ Note

### ● Basic connection : Connect to relay or other resistor



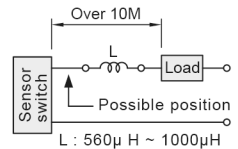
### ● Connect to the programmable controller



1. When wire length of sensor switch connection load is more than 10 meters, inductor shall be installed near to sensor side to avoid ripple.

2. Applied voltage and current shall not exceed the specified value.

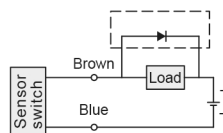
3. When inductive load is connected it is advisable to install protection circuit.



## ◉ Protect electric circuit

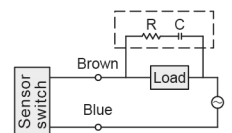
### DC load :

Connection in parallel one diode at counter clock-wise direction of two sides of load



### AC load :

Connection in parallel one R, C electric circuit at two sides of load.



R:2.7kΩ  
C:0.1µ f/600V