

BTC-07 SERIES

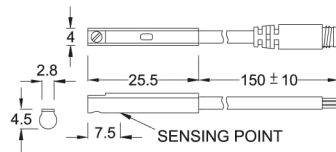
biltec®

RoHS

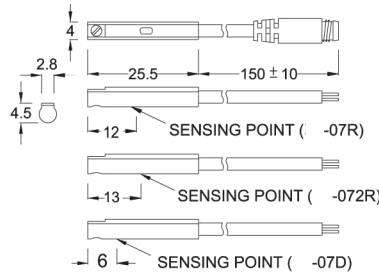


■ DIMENSION

BTC-07N, BTC-07P, BTC-07N-QD, BTC-07P-QD



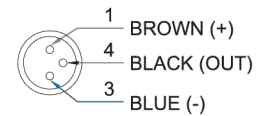
BTC-07R, BTC-072R, BTC-07D,
BTC-07R-QD, BTC-072R-QD, BTC-07D-QD



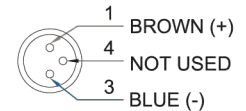
Unit:mm

■ QD PINOUT

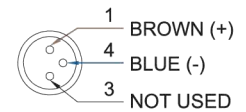
*3 wire QD wiring



*2 wire QD wiring



*2 wire EQD wiring



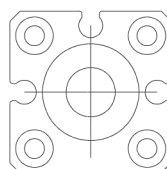
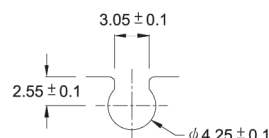
■ SPECIFICATION

TYPE	BTC-07R	BTC-072R	BTC-07D	BTC-07N	BTC-07P
CONNECT DIAGRAM					
CHARACTERISTICS	2-Wire Type			3-Wire Type	
WIRING METHOD	SPST, Normally Open			Solid State Output, Normally Open	
SWITCHING LOGIC	Reed Switch			--	
SENSOR TYPE	5~120V DC/AC			5~240V DC/AC	
OPERATING VOLTAGE	100 mA max.			4~40 mA max.	
SWITCHING CURRENT	10 W max.			1.5 W max.	
CONTACT RATING (NOTE 1)	--			8 mA @ 24V DC max.	
CURRENT CONSUMPTION	3.5 V max.			1 V @ 200mA max.	
VOLTAGE DROP	--			0.01 mA max.	
LEAKAGE CURRENT	Red LED	Green LED	Red LED	Green LED	
INDICATOR	ø2.8, 2C, PUR			ø2.8, 3C, PUR	
CABLE	200 Hz			1000 Hz	
OPERATING FREQUENCY	70 Gauss			40 Gauss	
MAGNET REQUIREMENT (NOTE 2)	-10~70°C			50 G	
TEMPERATURE RANGE	30 G			9 G	
SHOCK (NOTE 3)	IEC 529 IP 67			1	
ENCLOSURE CLASSIFICATION	4			2,3,4	
PROTECTION CIRCUIT (NOTE 5)	1			4	

NOTE:

1. WARNING: Never exceed rating (Watt=Voltage x Amperage). Permanent damage to sensor will occur.
2. Measuring standard target: ø15.5Xø8X5t (Anisotropy rubber magnet)
3. Sin wave / X, Y, Z 3 directions / 3 times each direction / 11 ms each time.
4. Double amplitude 1.5 mm / 10Hz~55Hz~10Hz (Sweep 1 min) / X, Y, Z 3 directions / 1 hour each time.
5. 1=None / 2=Short-circuit / 3=Power Source Reverse polarity / 4=Surge Suppression

■ GROOVE DIMENSION



Unit:mm

Pressure Switch

Magnetic Switch

Circular Connector